

BITalino (r)evolution Freestyle Kit Data Sheet

BFK 160616

SPECIFICATIONS

- > **Sampling Rate:** 1, 10, 100 or 1000Hz
- > **Analog Ports:** 4 in (10-bit) + 2 in (6-bit)
+ 1 auxiliary in (battery) + 1 out (8-bit)
- > **Digital Ports:** 2 in (1-bit) + 2 out (1-bit)
- > **Communication:** Bluetooth or BLE
- > **Range:** up to ~10m (in line of sight)
- > **Sensors:** EMG; ECG; EDA; EEG;
ACC; LUX; BTN
- > **Actuators:** LED; BUZ
- > **Size:** 100x65x6mm
- > **Battery:** 500mA 3.7V LiPo (rechargeable)
- > **Consumption:** ~65mA
- > **Accessories:** 3x Electrode cable with
30cm; 2x Electrode cable with 10cm;
5x Crimp pins; 2x Molex Sherlock plug
(3-pin); 4x Molex Sherlock (4-pin) socket;
5x Electrodes; 1x ProtoBIT

FEATURES

- > Ideal for hardware prototyping
- > Stackable to enable compact form factors
- > Raw data acquisition
- > Battery charger
- > Easy-to-use
- > Affordable

APPLICATIONS

- > Psychophysiology
- > Biomedical projects
- > Electrical engineering
- > Human-Computer Interaction
- > Robotics & Cybernetics
- > Physiology studies
- > Biofeedback

GENERAL DESCRIPTION

Our unique BITalino (r)evolution Freestyle kit has all blocks as individual components, making it ideal for wearables. Kits include the basic parts to get started. Our cross-platform OpenSignals software enables instant data visualization and recording, while the APIs provide low-level access from third party and custom applications.

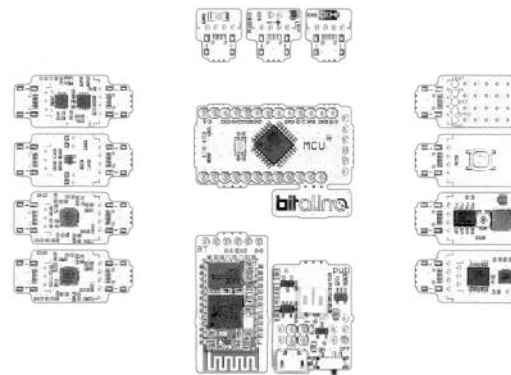


Fig. 1. Blocks are provided as individual components, so you can let your imagination run free and create bespoke devices; available with Bluetooth (Fig. 4) or BLE (Fig. 5).



Fig. 2. BITalino Freestyle kits enable you to easily create wearables and miniaturized biosignal acquisition devices (some components in the image are optional accessories).

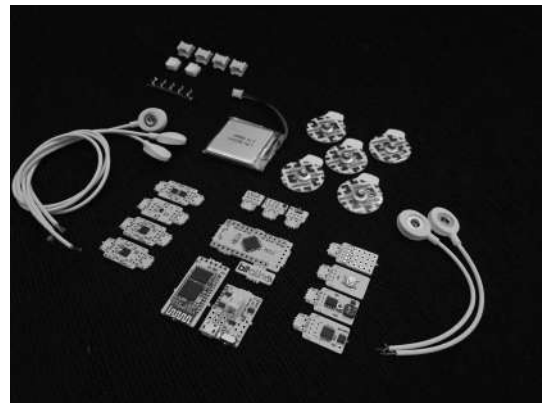


Fig. 3. Parts and accessories included in the kit.

bitalino

PLUX – Wireless Biosignals, S.A.
Av. 5 de Outubro, n. 70 – 8.
1050-059 Lisbon, Portugal
bitalino@plux.info
<http://bitalino.com/>

REV A

© 2016 PLUX 

This information is provided "as is," and we make no express or implied warranties whatsoever with respect to functionality, operability, use, fitness for a particular purpose, or infringement of rights. We expressly disclaim any liability whatsoever for any direct, indirect, consequential, incidental or special damages, including, without limitation, lost revenues, lost profits, losses resulting from business interruption or loss of data, regardless of the form of action or legal theory under which the liability may be asserted, even if advised of the possibility of such damages.



BEWARE: DIRECT OR INDIRECT COUPLING TO THE MAINS MAY RESULT IN SHOCKING HAZARD



BITalino (r)evolution Freestyle Kit Data Sheet

FUNCTIONAL BLOCKS

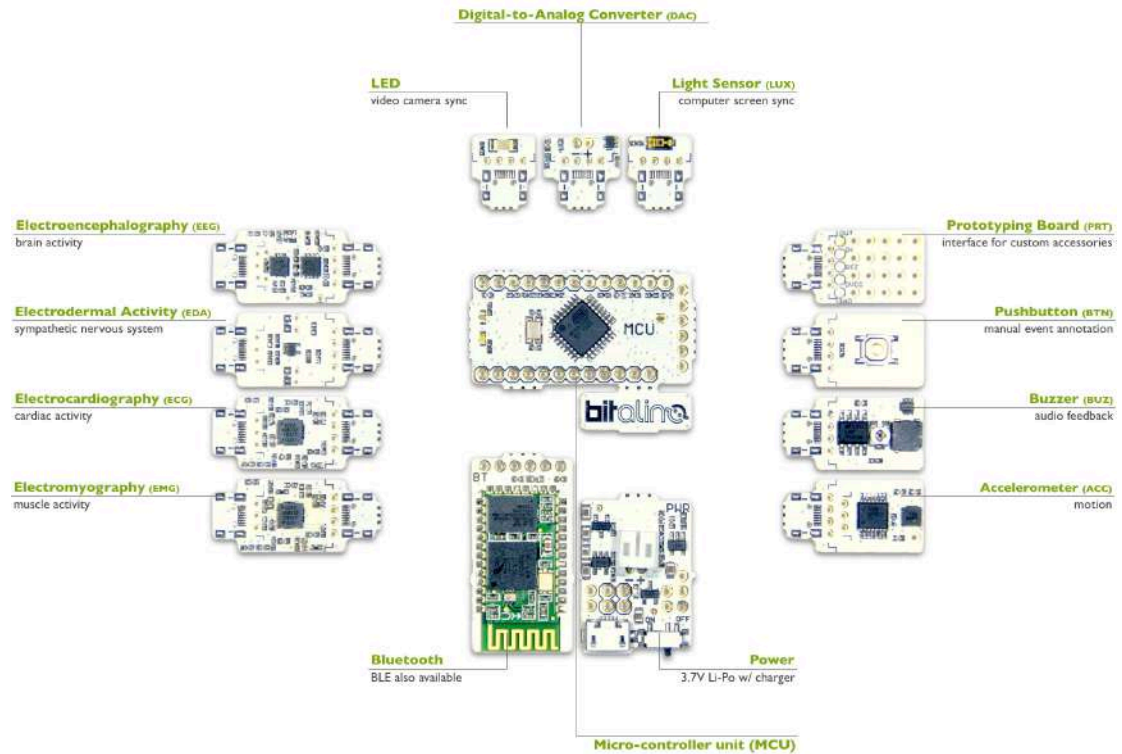


Fig. 4. BITalino (r)evolution Freestyle with Bluetooth connectivity.

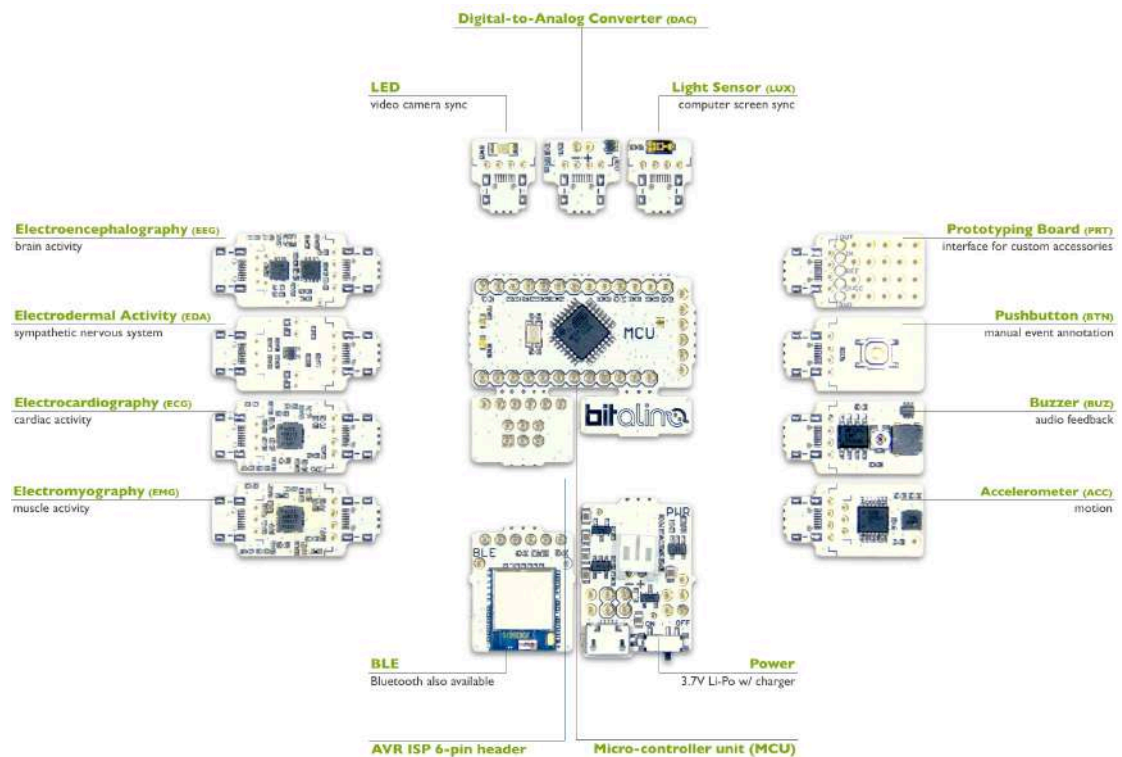


Fig. 5. BITalino (r)evolution Freestyle with BLE connectivity.

BITalino (r)evolution Freestyle Kit Data Sheet

PACKAGING



Fig. 6. BITalino (r)evolution Freestyle kits ship in a convenient eco-friendly packaging.

ORDERING GUIDE

Part #	Description
KIT-REV-FREESTYLE-BT-UCE6	BITalino (r)evolution Freestyle kit with Bluetooth connectivity
KIT-REV-FREESTYLE-BLE-UCE6	BITalino (r)evolution Freestyle kit with BLE connectivity