



SampleHRV_Report

Wed Mar 25 2020 15:30:00 GMT

OPENSIGNALS VERSION: Public Build 2019-09-02

Author: PLUX

Devices

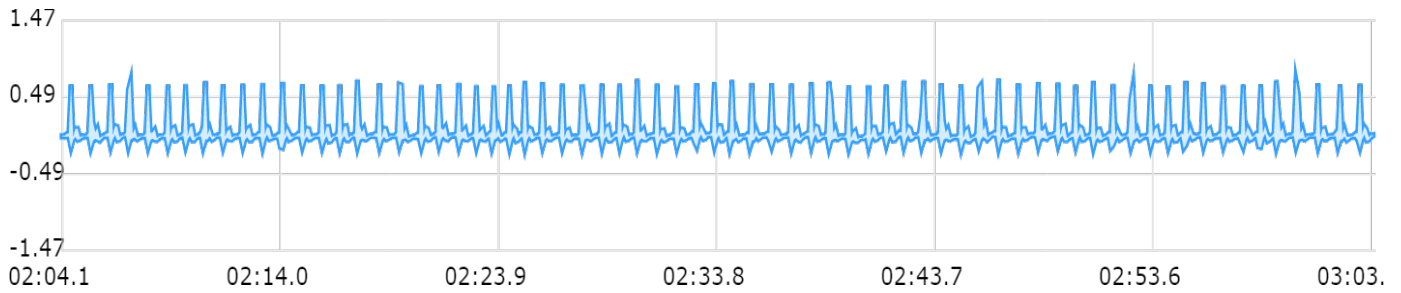
name		address		type		sampling rate	
00:07:80:79:6F:DB		00:07:80:79:6F:DB		biosignalsplux		1000 Hz	
channel	label	sensor	resolution	channel	label	sensor	resolution
A1	PORT1_CHN1	ECG	16	IO	INPUT/OUTPUT	--	1

Heart Rate Variability (HRV) analysis

unit: Millivolt session time: 06:39.1 selection start: 02:04.1 selection end: 03:03.6 total processed time: 00:59.5

00:07:80:79:6F:DB

A1 - ECG



Processed channels

00:07:80:79:6F:DB

A1

Processing results

Time parameters

00:07:80:79:6F:DB											
channel	MIN NN(ms)	MAX NN(ms)	AVG NN(ms)	SD NN(ms)	rMSSD(ms)	NN20	pNN20(%)	NN50	pNN50(%)	AVG IHR(BPM)	SD IHR(BPM)
1	705	960	860	59	60	49	73	27	40	69	5

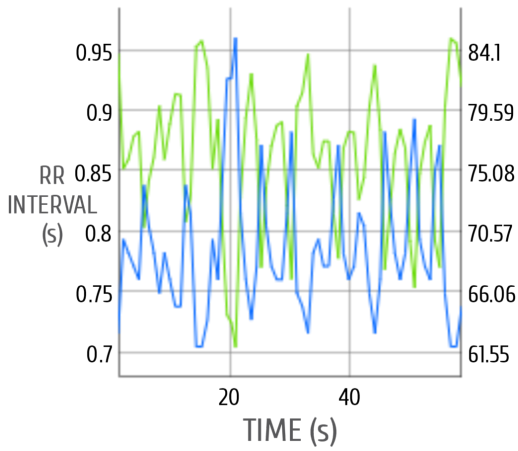
Frequency parameters

00:07:80:79:6F:DB				
	VLF	LF	HF	UNIT
FREQ	0-0.04	0.04-0.15	0.15-0.4	Hz
PEAK	0.035	0.104	0.243	Hz
POWER	73	1042	1853	ms ²
POWER	2	35	62	%
POWER		36	64	n.u.
LF/HF	0.6			

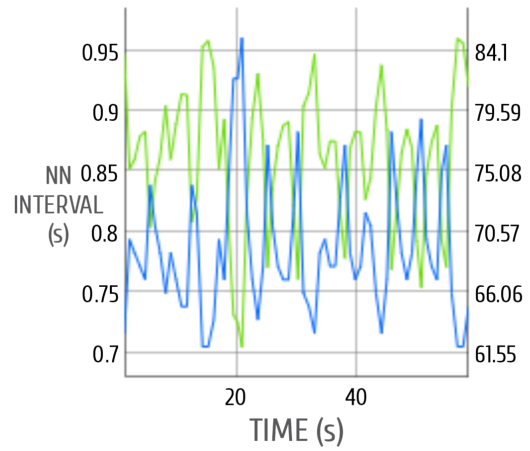
Non linear parameters

00:07:80:79:6F:DB		
SD1 (ms)	SD2 (ms)	SD1/SD2
43	72	0.6

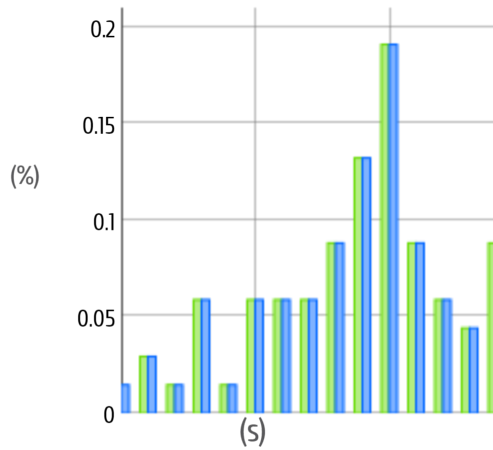
TACHOGRAM [RR - IHR]



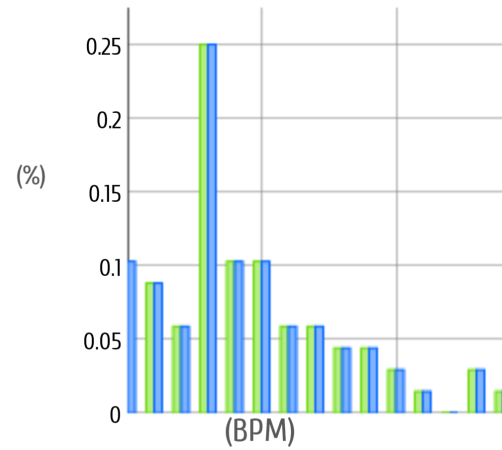
TACHOGRAM [NN - IHR]



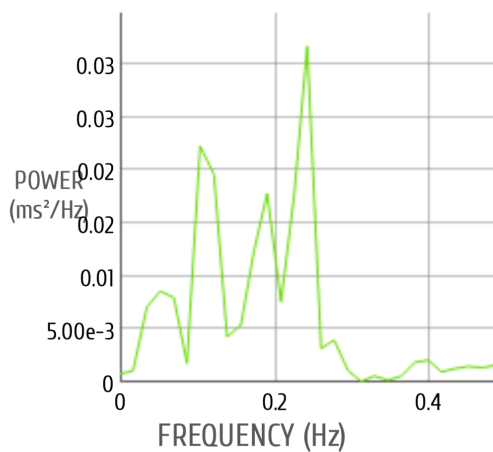
HISTOGRAM [RR - NN]



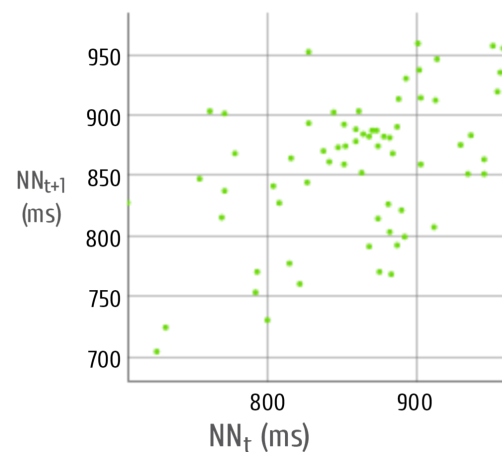
IHR HISTOGRAM [RR - NN]



POWER SPECTRAL DENSITY



POINCARÉ PLOT



Glossary

1. HRV: Heart Rate Variability.