



Sample EMG Analysis Report

Tue Apr 30 10:20:21 2019 GMT+1
OPEN SIGNALS VERSION: Public Build 2019-09-02

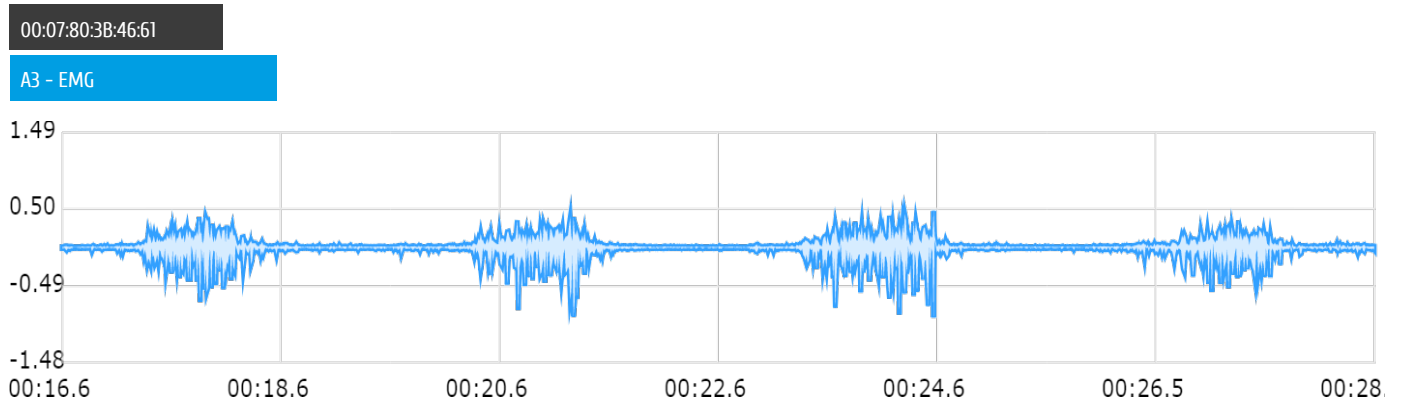
Author: PLUX

Devices

name		address		type		sampling rate	
00:07:80:3B:46:61		00:07:80:3B:46:61		biosignalsplux		1000 Hz	
channel	label	sensor	resolution	channel	label	sensor	resolution
A3	PORT3_CHN1	EMG	16	I0	INPUT/OUTPUT	--	1

Electromyographic analysis

unit **Millivolt** session time **00:28.5** selection start **00:16.6** selection end **00:28.5** total processed time **00:11.9**



Processed channels

00:07:80:3B:46:61

A3

FILTER applied **bandpass - [10,100] Hz cutoff - Order: 6**

DETECTION OPTIONS applied to TKE: smooth window of **0.5** seconds

Muscle Activation results

MVC

calculated from **current signal**

00:07:80:3B:46:61

channel	max amp (mV)
3	0.90482

Activations

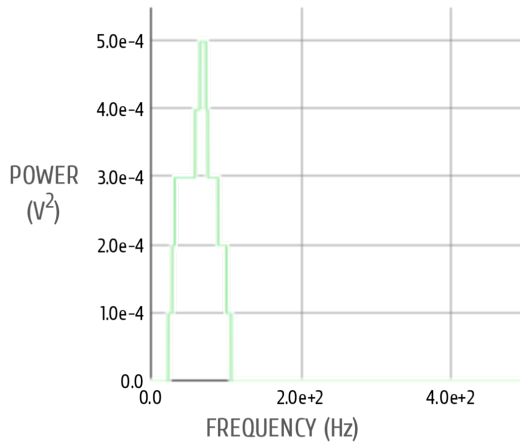
find **all muscle activations**

00:07:80:3B:46:61

channel	digital	activation	start (s)	end (s)	duration (s)	latency (s)	max (mV)	min (mV)	ampl+ (%)	ampl- (%)	ampl+- (mV)	rms (mV)	area (mV ²)
3	NONE	1	17.492	18.272	0.780	0.852	0.393	-0.702	43	78	1.09	0.15	83.45
	NONE	2	20.546	21.450	0.904	3.906	0.396	-0.893	44	99	1.29	0.14	90.46
	NONE	3	23.465	24.658	1.193	6.825	0.475	-0.903	52	100	1.38	0.15	120.03
	NONE	4	26.808	27.606	0.798	10.168	0.346	-0.573	38	63	0.92	0.12	70.44
Diff	-	-	-00:02.9	-00:03.2	-00:00.3	2919.0 ms	-0.08 mV	0.01 mV	-	-	-0.09 mV	-0.01 mV	-29.56 mV ²
Ratio	-	-	-	-	0.76	0.57	0.83	0.99	-	-	0.93	0.96	0.75

1. ampl+ and ampl- are calculated as % of MVC.

POWER SPECTRAL DENSITY



Glossary

1. MVC: Maximum Voluntary Contraction.
2. TKE: Teager-Kaiser Energy operator.